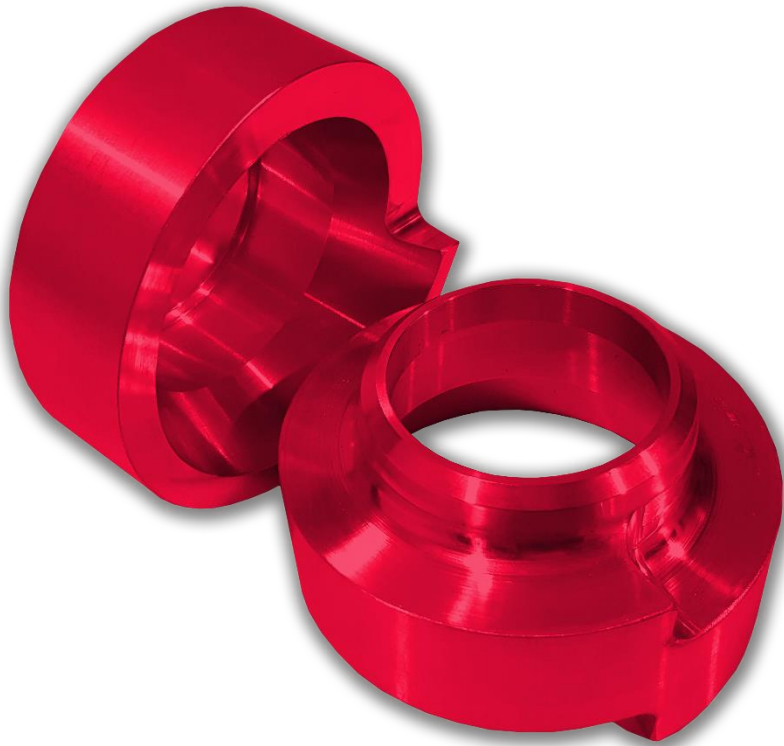




SUSD Coil Spacer – Manual / Fitting Guide / Instructions



Thank you for purchasing the SUSD coil spacer kit. Please follow this fitting guide for best practices.

Step 1 – Remove air box assembly:

The entire air box needs to be removed to access the strut retainer bolt on the RH side of the vehicle to gain access to the strut retainer bolt.

Step 2 – Jack vehicle and remove front wheels

Lift the front of the vehicle off the ground ensuring you use chassis stands for safety. Remove both front wheels.

Note: When using spring tensioners shown in Fig 1. To remove the spring from the strut, we recommend fitting them prior to jacking the vehicle off the ground. This will save you from having to screw them down as far. When using spring tensioners Fig 2. remove the strut prior to compressing the spring for removal

Fig 1.

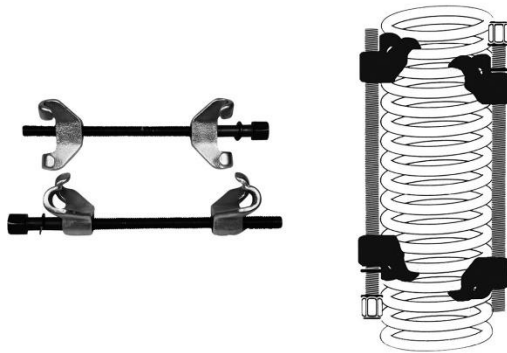


Fig 2.

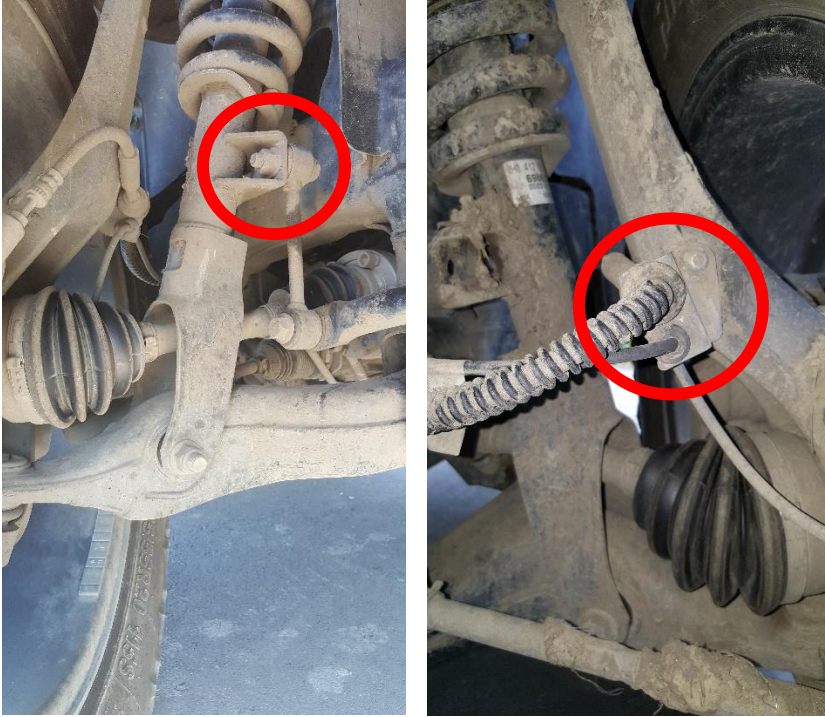


Step 3 – Remove sway bar links, brake and ABS lines:

Remove both sway bar links from the strut as shown in Fig 3. and remove both brake and ABS lines from the lower control arm Fig 4.

Fig 3.

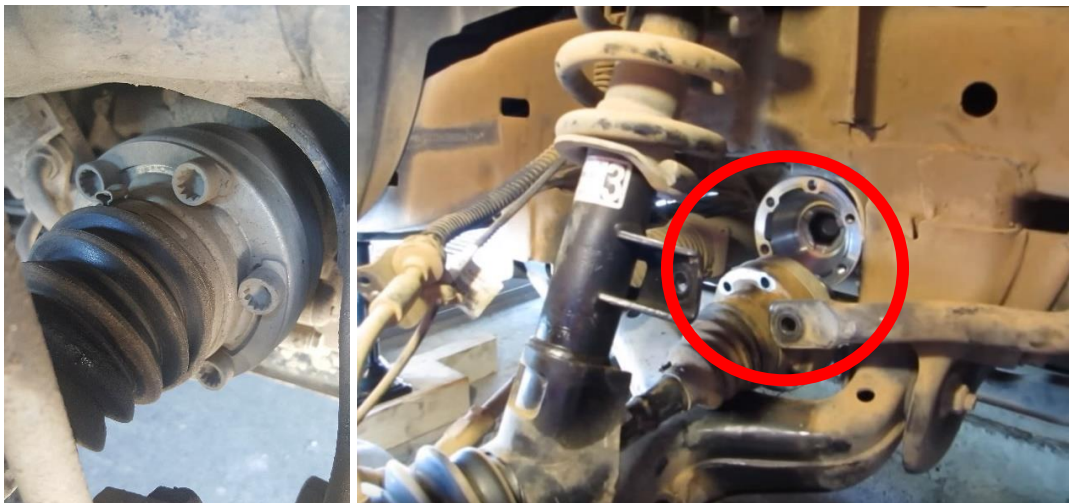
Fig 4.



Step 4 – Remove axle:

Remove both axles as shown Fig 5. from the diff end CV using a brace to stop the axle from turning.

Fig 5.



Step 5 – Remove upper control arm, and strut:

Remove upper control arm bolt Fig 6. then remove lower strut bolt Fig 7. and top strut retainer washer Fig 8. Now the strut assembly can be removed from the vehicle.

Fig 6.



Fig 7.



Fig 8.



Step 6 – Remove spring and fit spacer:

Remove spring retainer nut and top hat Fig 9. and remove spring from the shock. **IMPORTANT:** Ensure this step is done with spring tensioners secured in place for prevent the spring re coiling off the strut!

Now you'll need to remove the rubber boot from the strut, and the plastic seal protector Fig 10. before sliding the spacer of the strut body into place and replacing the seal protector Fig 11.

Fig 9.



Fig 10.



Fig 11.



Now repeat steps 6 and 1 to reassemble the vehicle

Lower the vehicle to the ground, recheck each bolt/nut for tightness and enjoy – you're ready to go!

THIS FITTING IS FOR RECOMMENDATION PURPOSES ONLY AND SUSU IS NOT LIABLE FOR DAMAGE CAUSED BY INCORRECT FITTING



www.susd.com.au